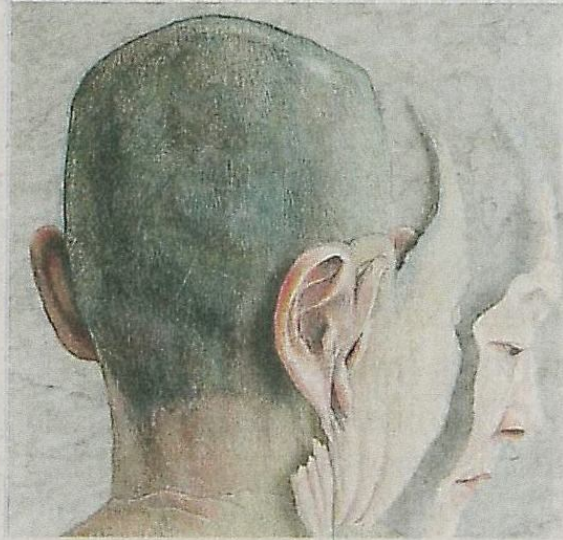


THIS WEEK

ART



Janet Wang: Archetypical

Who we are has a great deal to do with cultural environment. Vancouver artist Janet Wang suggests that the digitized world creates notions of self via select snapshots, Facebook questionnaires, and pithy, 140-character updates. "We buy into virtual identities rather than actual ones," she says. But her intimate portraits explore this phenomenon using vintage methods. She layers egg tempera paint on marble and interprets her subjects as historical archetypes such as the hero, trickster or fool — implying that the nature of identity has always been rife with ideological construct.

Opens Feb. 9, 3 p.m. to 4:30 p.m.; runs until March 1 | Seymour Art Gallery
More info: seymourartgallery.com