

BRIGHT LIGHTS! *by Cindy Goodman*

Discovery exhibition

LINE, the Seymour Art Gallery's annual juried **Discovery** exhibition for new and emerging artists launched Jan. 10 with a reception and awards presentation in the Deep Cove space. This year's exhibition reflects the theme **LINE** and was juried by artist Wayne Eastcott, Vancouver Art Gallery's curatorial assistant Adrienne Rempel and Seymour gallery's curator/director Sarah Cavanaugh. Work shown represents a variety of mediums, including drawing, painting, ceramics, mixed media film and photography. The show will remain on display until Jan. 30. seymourartgallery.com



Jennifer Skillen in front of *Learning to Meditate*



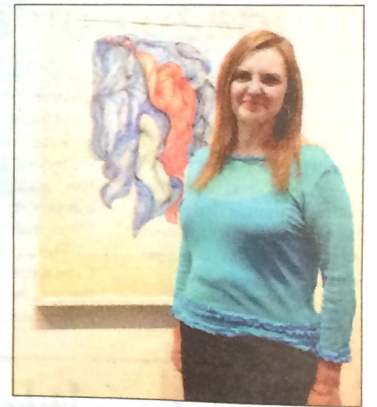
Adele Maskwa-iskwew Arseneau with her work *Black Bear*



Ryder White with *Time Symmetry*



Sam Reeve with her piece *HALO*



Anette Arnott and *Flow*



Kelly Radcliffe with *Floating Through Time*



Susie Benes with *Marked*



Marion Landry with her piece *Rose Grid on Linen*



Sherry Cooper next to *Over Under #1*